

# Non-UCITS retail scheme Key Investor Information



This document provides you with key investor information about this fund. It is not marketing material. The information is required by law to help you understand the nature and the risks of investing in this fund. You are advised to read it so you can make an informed decision about whether to invest.

## Scottish Widows Corporate Bond 1 Fund Class W Accumulation

A sub-fund of the Scottish Widows Income and Growth Funds ICVC.  
 The Fund is managed by Scottish Widows Unit Trust Managers Ltd, part of the Lloyds Banking Group.  
 ISIN: GB00BD7W3S87

### Objectives and investment policy

To provide capital growth by investing in a portfolio of global investment grade corporate bonds.

The benchmark index for the Fund is the Barclays Global Aggregate Corporate Bond Index hedged to Sterling (the "Index"). The Fund is actively managed by the Fund Manager who chooses investments with the aim of outperforming the Index by 1% per annum on a rolling 3 year basis, before deduction of fees. At least 80% of the Fund will invest in a diversified portfolio of global investment grade\* corporate bonds. The Fund may also invest in non-investment grade corporate bonds\*\*, government bonds, supranational bonds (these are a type of fixed interest security issued by two or more governmental organisations) and asset backed securities such as securitised loans. In addition the Fund may invest in cash and cash like investments.

Derivatives may be used for investment purposes. The use of derivatives for the purpose of meeting the investment objective of the Fund is not intended to change the risk profile of the Fund.

The Fund Manager is limited in the extent to which positions can vary to those of the Index. The limits help to provide a balance between the spread of assets within the Fund and risk management. They also provide a balance between the amount the Fund can vary from the Index and providing the Fund Manager with flexibility to seek to outperform the Index. As a result the Fund's performance may differ from the Index.

Derivatives and stock lending may be used for the purpose of managing the Fund in a way that is designed to reduce risk or cost and/or generate extra income or growth (often referred to as efficient portfolio management). The Fund's investments may be hedged back to Sterling. This involves the use of derivatives to offset the effect of currency exchange rates.

\*Credit ratings indicate the likelihood that an issuer will be able to make their payments. Investment grade bonds have achieved or exceeded a minimum credit rating awarded by a credit rating agency. Therefore they are considered lower risk than bonds with a lower credit rating.

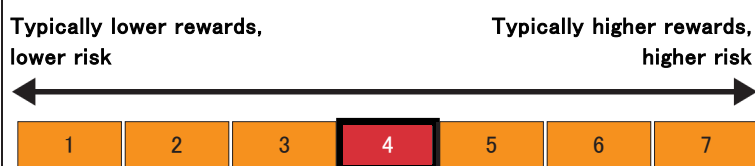
\*\*Non-investment grade bonds, also known as high yield bonds, have a lower credit rating than investment grade bonds, and so are considered higher risk.

The Barclays Global Aggregate Corporate Bond Index hedged to Sterling has been selected as an appropriate benchmark as it provides a representation of the returns of securities in the global investment grade corporate bond market.

Investors should aim to hold their investment in the Fund for the medium to long term (at least five to ten years). Any Income received by the Fund is retained in the Fund and has the effect of increasing the share price. We calculate the value of the Fund at 8am daily on working days in the UK. Our dealing times are from 9am to 5pm each working day. Instructions received before 5pm will receive the next available price.

### Risk and reward profile

The Risk and Reward Indicator table demonstrates where the Fund ranks in terms of its potential risk and reward. The higher the rank the greater the potential reward but the greater the risk of losing money. It is based on past data, may change over time and may not be a reliable indication of the future risk profile of the Fund. The shaded area in the table below shows the Fund's ranking on the Risk and Reward Indicator.



- The Fund is ranked at 4 because it has experienced medium levels of volatility over the past 5 years.
- The value of your investment and any income from it is not guaranteed and can go up and down depending on investment performance. Specific investment risks for the Fund are:
  - The value of a bond / fixed interest security could fall if the issuer's credit rating falls. Values are also likely to fall if interest rates rise (but increase when interest rates fall). In addition issuers might fail to make their income payments and/or repay capital.
  - Using derivatives for investment purposes is not intended to increase the Fund's risk profile, but may increase volatility. Derivative strategies could increase or reduce the impact of market movements which has the potential to result in greater losses, or gains, to the Fund.
  - Exchange rate changes might cause the value of overseas investments and any income from them to go up and down.
  - The use of derivatives for Efficient Portfolio Management might not achieve the described outcomes and may result in greater fluctuations of the value of the Fund, however it is not intended that this will cause the risk profile of the Fund to change.

## Charges

The charges you pay are used to pay the costs of running the Fund, including the costs of marketing and distributing it. These charges reduce the potential growth of your investment.

### One-off charges taken before or after you invest

Entry charge	0.00%
Exit charge	0.00%

These are the maximum charges that we might take out of your money before it is invested and before we pay out the sale proceeds of your investment. In some cases, you might pay less and you should speak to your financial adviser about this.

### Charges taken from the Fund over a year

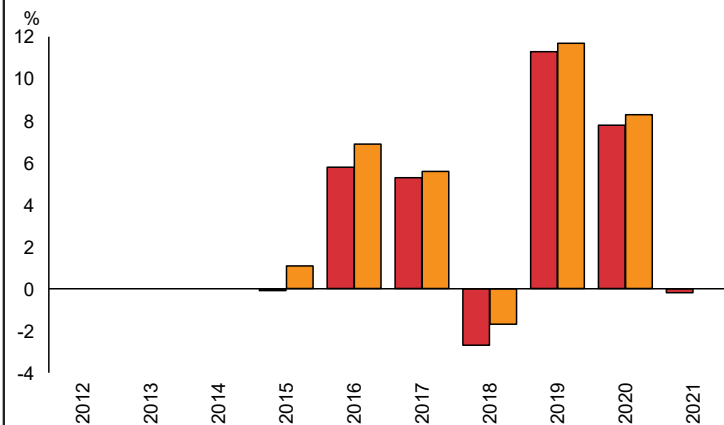
Ongoing charges	0.02%
-----------------	-------

### Charges taken from the Fund under specific conditions

Performance fee	NONE
-----------------	------

- The ongoing charges figure is based on the last year's expenses and may vary from year to year. It excludes the costs of buying or selling assets for the Fund (unless these assets are shares of another fund).
- There is no charge to switch into this fund. You may incur an Exit Charge from the fund you are switching from. Please refer to the KII document for that fund.
- The Ongoing Charge figure is as at 02/22
- The Ongoing Charge is taken from the income of the Fund. For more information about charges, please refer to the Prospectus of Scottish Widows Income and Growth Funds ICVC, which is available at [www.scottishwidows.co.uk/kiids](http://www.scottishwidows.co.uk/kiids)

## Past performance



	2012	2013	2014	2015	2016	2017	2018	2019	2020	2021
Fund	-0.1	-0.1	5.8	5.8	5.3	-2.7	11.3	7.8	7.8	-0.2
Benchmark 1 *	1.1	1.1	6.9	6.9	5.6	-1.7	11.7	8.3	8.3	0.0

Source: FE fundinfo 2022

- You should be aware that past performance is not a guide to future performance.
- Fund launch date: 25/09/2014.
- Share/unit class launch date: 25/09/2014.
- Performance is calculated in GBP.
- Performance is net of charges (excluding Entry Charge).
- The Index plus outperformance target and the Fund performance figures are shown on an annual basis.
- In practice, as explained in the 'Objective and investment policy' section, the Fund Manager's outperformance target applies over rolling 3 year periods.
- In addition, the Index plus outperformance target is calculated without deduction of charges whereas fund performance is calculated after deduction of charges.
- \* Benchmark 1 - Bloomberg Global Aggregate Corporate Bond Hedge GBP + 1%

## Practical information

- The Investment Adviser to the Fund is Schroders Investment Management Limited.
- The depositary for the Fund is State Street Trustees Limited
- The Fund prices are available from [www.scottishwidows.co.uk](http://www.scottishwidows.co.uk)
- The tax regime applicable is that of the United Kingdom and may have an impact on your tax position.
- Scottish Widows Income and Growth Funds ICVC is a Non-UCITS retail scheme (NURS) with a number of different funds. This Key Investor Information Document describes a single fund of the NURS. The Prospectus and Report and Accounts are prepared for the entire NURS and are available in English and free of charge at [www.scottishwidows.co.uk](http://www.scottishwidows.co.uk)
- You can make switches into other shares or funds. See "Switching" in the Prospectus.
- Scottish Widows Income and Growth Funds ICVC has a number of different funds. The assets and liabilities of each fund are segregated by law. Therefore, the assets of this fund belong exclusively to it and are not available to meet the liabilities of any other fund of the Scottish Widows Income and Growth Funds ICVC.
- Details of our remuneration policy, which includes a description of how remuneration and benefits are calculated, the identities of the persons responsible for awarding remuneration and benefits and the composition of the remuneration committee can be found here - <http://reference.scottishwidows.co.uk/docs/groupremun.pdf>. A paper copy is available free of charge upon request.