

# Non-UCITS retail scheme Key Investor Information

This document provides you with key investor information about this fund. It is not marketing material. The information is required by law to help you understand the nature and the risks of investing in this fund. You are advised to read it so you can make an informed decision about whether to invest.

## The Stellar Fund Net Income Shares [ISIN:GB00B2R8FS32]

The Authorised Corporate Director of the Fund is Evelyn Partners Fund Solutions Limited, part of the Evelyn Partners group.

### Objectives and investment policy

The Fund aims to achieve (through a combination of capital and income) a return of 4% per year more than the Consumer Prices Index (CPI) over a rolling 10-year period after deducting fees and costs.

The Fund seeks to outperform the index by investing at least 60% in companies that are listed on major stock exchanges around the world and in emerging markets. In normal market conditions, the Fund will normally be invested in between 50 – 80 companies. This exposure will be mostly direct, with up to 5% through collective investment schemes and investment trusts.

The Fund may invest up to 30% in a wide range of alternative assets accessed through listed investment vehicles, such as listed investment trusts and listed investment companies, including:

- infrastructure bonds or equities, green energy bonds or equities, commodities, including gold, through ETCs, private equity, distressed debt, hedge funds, alternative bonds (including high yield bonds and asset backed bonds)

The Fund may also invest directly or indirectly, through other collective investment schemes (including funds managed by the Manager) in the following:

- up to 10% in government and corporate bonds from anywhere in the world that have a minimum credit rating of BB at the time of purchase
- up to 10% in property, through REITs and property unit trusts
- up to 10% in cash, near cash and deposits

The Fund may use derivatives for Efficient Portfolio Management (EPM), i.e. to protect against market or currency movements, to reduce costs, or to earn income or capital.

Any income the Fund generates will be paid out to you.

You can buy and sell shares on the Tuesday of each week, except in the week when the last Business Day of the month falls, when the Dealing Day will be the last Business Day of the month only.

The Fund is actively managed, which means that the manager has discretion over the composition of its portfolio, and the Fund is not tracking the benchmark nor is the Fund constrained by the value, price or components of that benchmark or any other aspect. The benchmark is a target for the Fund, where the target return of the Fund aims to match or exceed the return of that benchmark.

For full investment objectives and policy details please refer to the Prospectus.

### Risk and reward profile

The Risk and Reward Indicator table demonstrates where the Fund ranks in terms of its potential risk and reward. The higher the rank the greater the potential reward but the greater the risk of losing money. It is based on past data, may change over time and may not be a reliable indication of the future risk profile of the Fund. The shaded area in the table below shows the Fund's ranking on the Risk and Reward Indicator.

Typically lower rewards,  
lower risk

Typically higher rewards,  
higher risk



- The Fund is in a higher category because the price of its investments have risen or fallen frequently and more dramatically than some other types of investment. The category shown is not guaranteed to remain unchanged and may shift over time. Even the lowest category does not mean a risk-free investment.
- The price of the Fund and any income from it can go down as well as up and is not guaranteed. Investors may not get back the amount invested. Past performance is not a guide to future performance.
- Where the Fund invests in bonds, there is a risk the bond issuer may fail to meet its repayments. This is usually a greater risk for bonds that produce a higher level of income. Changes in interest rates, inflation and the creditworthiness of the bond issuer may also affect the bond's market value.
- Investment trusts and closed ended funds may borrow to purchase additional investments. This can increase returns when stock markets rise but will magnify losses when markets fall. The value of an investment trust or a closed-ended fund moves in line with stock market demand and its share price may be less than or more than the net value of the investments it holds.
- The Fund is entitled to use derivative instruments for EPM. Derivatives may not achieve their intended purpose. Their prices may move up or down significantly over relatively short periods of time which may result in losses greater than the amount paid. This could adversely impact the value of the Fund. The organisation from which the Fund buys a derivative may fail to carry out its obligations, which could also cause losses to the Fund.
- The price of gold or other resources may be subject to sudden, unexpected and substantial fluctuations. This may lead to significant declines in the values of any companies developing these resources in which the Fund invests and significantly impact investment performance. The Fund may invest in securities not denominated in sterling, the value of your investments may be affected by changes in currency exchange rates.
- The Fund may invest in securities not denominated in sterling, the value of your investments may be affected by changes in currency exchange rates.
- For full details on risk factors for this Fund, please refer to the Prospectus.

## Charges

The charges you pay are used to pay the costs of running the Fund, including the costs of marketing and distributing it. These charges reduce the potential growth of your investment.

### One-off charges taken before or after you invest

Entry charge	5.00%
Exit charge	0.00%

These are the maximum charges that we might take out of your money before it is invested and before we pay out the sale proceeds of your investment. In some cases, you might pay less and you should speak to your financial adviser about this.

### Charges taken from the Fund over a year

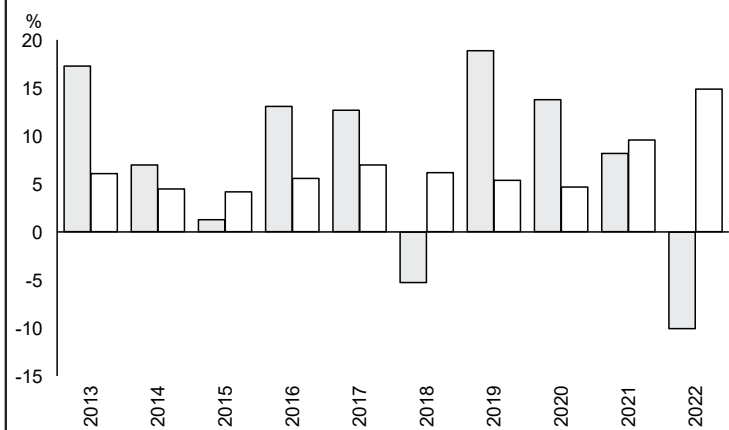
Ongoing charges	0.79%
-----------------	-------

### Charges taken from the Fund under specific conditions

Performance fee	NONE
-----------------	------

- The ongoing charges figure is based on the last year's expenses and may vary from year to year. It excludes the costs of buying or selling assets for the Fund (unless these assets are shares of another fund).
- Previously, the Ongoing Charges Figure (OCF) included expenses incurred by underlying holdings of collective investment schemes in relation to the Fund (the synthetic OCF). Following guidance issued by the Investment Association on 2 July 2020, the synthetic OCF calculation has been expanded to include investment trusts.
- A dilution levy may be charged on a purchase or sale of shares in the Fund in some cases. It may be necessary to reduce the difference between the cost of buying or selling the Fund's investments and the Fund's mid-market share price. Any dilution levy charged will be paid into the Fund.
- The Fund's annual report for each financial year will include detail on the exact charges made.
- The ongoing charges figure is for the year ending 05/04/2023.
- For further information about charges, please refer to relevant sections in the Fund's Prospectus.

## Past performance



	2013	2014	2015	2016	2017	2018	2019	2020	2021	2022
Fund	17.3	7.0	1.3	13.1	12.7	-5.3	18.9	13.8	8.2	-10.1
Index*	6.1	4.5	4.2	5.6	7.0	6.2	5.4	4.7	9.6	14.9

Source: FE fundinfo 2023

- You should be aware that past performance is not a guide to future performance.
- Fund launch date: 20/05/2008.
- Share/unit class launch date: 20/05/2008.
- Performance is calculated in GBP.
- All charges and fees, except any entry, exit or switching charges, have been included within the performance calculation.
- This benchmark is a target for the Fund, and the Fund is not tracking the benchmark nor is constrained by it.
- \* UK Consumer Price Index + 4%

## Practical information

- The Depositary of the Fund is NatWest Trustee & Depositary Services Limited.
- You can get further information on the Fund, including how to buy and sell shares, from the Prospectus and the latest annual and half-yearly reports and accounts, which are in English only. You can get copies of these free of charge, by telephoning 0141 222 1151.
- The latest share prices are available on [www.trustnet.com](http://www.trustnet.com) or by telephoning 0141 222 1151.
- UK tax laws may impact your own tax position.
- Evelyn Partners Fund Solutions Limited may be held liable solely on the basis of any statement contained in this document that is misleading, inaccurate or inconsistent with the relevant parts of the prospectus for the non-UCITS.
- Details of the Evelyn Partners Fund Solutions Limited remuneration policy are available on <https://www.evelyn.com/regulatory/remuneration-code-disclosure> and a copy will be made available free of charge on request.

The Fund is authorised in the UK and regulated by the Financial Conduct Authority.

Evelyn Partners Fund Solutions Limited is authorised in the UK and regulated by the Financial Conduct Authority.

This Key Investor Information is accurate as at 16/05/2023.