

Key Investor Information

This document provides you with key investor information about this fund. It is not marketing material. The information is required by law to help you understand the nature and the risks of investing in this fund. You are advised to read it so you can make an informed decision about whether to invest.

MI Actavis Opportunity Fund ("the Fund") A Accumulation Shares

The Fund is a Sub-Fund of MI Actavis Wealth Funds. The Fund is an Open Ended Investment Company. ISIN: GB00BFYMDH41
Apex Fundrock Ltd is the Authorised Corporate Director of the Fund ("MI" and "MI Funds" are trading names of the ACD).

Objectives and investment policy

The Fund aims to achieve capital growth. It aims to deliver a return (before fees) of at least the UK Consumer Price Index plus 5% per annum over a 5 year period.

The Fund aims to achieve a positive return over a five year period. However, capital is at risk and there is no guarantee that a positive return will be achieved.

The Fund will generally invest in collective investment schemes, listed investment companies and exchange traded funds. Through such investments, the portfolio will achieve indirect exposure to a diversified range of asset classes and assets therein. These asset classes will vary over the time but are selected from the following: equities, fixed income, private equity, currencies, commodities, real estate and alternative investment strategies to the extent that each is permitted by the applicable laws and regulations.

The Fund may also invest directly in other transferable securities which may include: company shares, bonds (which are like loans to companies, government and other organisations that can pay a fixed or variable interest rate), private equity, money market instruments, deposits, cash and near cash investments.

The Fund will generally invest its assets in collective investment schemes, listed investment companies and exchange traded funds. However, the Investment Manager will continually assess market conditions and, if it believes it is necessary and for the benefit of the investors, it can adjust the asset allocation of such investments which may result either in a decrease in the proportion of investments in collective investment schemes, listed investment companies and exchange traded funds and increased exposure to other transferable securities, money market instruments, deposits, cash and near cash investments and derivatives or vice versa.

The composition of the portfolio will reflect the Investment Managers view of the potential future return of different underlying asset classes and specific investments.

The Investment Manager is able to invest the Fund's portfolio into derivatives, which are sophisticated investments that are linked to the rise and fall of prices of other assets. Derivatives will be used both to achieve the investment objective and for the purposes of efficient portfolio management to simply reduce risk or manage the Fund more efficiently.

Any income this share class generates will be reinvested to grow the value of your investment.

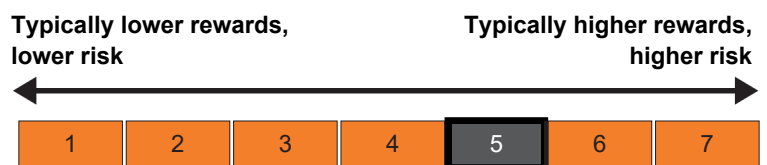
You can buy and sell shares on any business day in London.

Recommendation: this Fund may not be appropriate for investors who plan to withdraw their money within 5 years.

For full investment objectives and policy details please refer to the prospectus.

Risk and reward profile

The Risk and Reward Indicator table demonstrates where the Fund ranks in terms of its potential risk and reward. The higher the rank the greater the potential reward but the greater the risk of losing money. It is based on past data, may change over time and may not be a reliable indication of the future risk profile of the Fund. The shaded area in the table below shows the Fund's ranking on the Risk and Reward Indicator.



- The Fund is ranked at 5 because funds of this type have experienced medium to high rises and falls in value in the past. Please note that even the lowest risk class can lose you money and that extreme market circumstances can mean you suffer severe losses in all cases. The indicator does not take into account the following risks of investing in this Fund:
- The Fund invests into other funds which themselves invest in assets such as bonds, company shares, cash and currencies. The objectives and risk profiles of these underlying funds may not be fully in line with those of this Fund.
- Bond values are affected by changes in interest rates, inflation and any decline in creditworthiness of the bond issuer. Bonds that produce a higher level of income usually also carry greater risk as such bond issuers may not be able to pay the bond income as promised or could fail to repay the capital amount used to purchase the bond. There may be cases where the organisation from which we buy a bond fails to carry out its obligations, which could cause losses to the Fund.
- Investing overseas can bring additional returns and spread risk to different markets. There are risks, however, that changes in currency exchange rates may cause the value of your investment to decrease and increase.
- This Fund can invest in derivatives in order to meet its investment objectives or to protect from price and currency movement. This may result in gains or losses that are greater than the original amount invested.
- For further risk information please see the prospectus.

Charges

The charges you pay are used to pay the costs of running the Fund, including the costs of marketing and distributing it. These charges reduce the potential growth of your investment.

One-off charges taken before or after you invest

Entry charge	0.00%
Exit charge	0.00%

These are the maximum charges that we might take out of your money before it is invested and before we pay out the sale proceeds of your investment. In some cases, you might pay less and you should speak to your financial adviser about this.

Charges taken from the Fund over a year

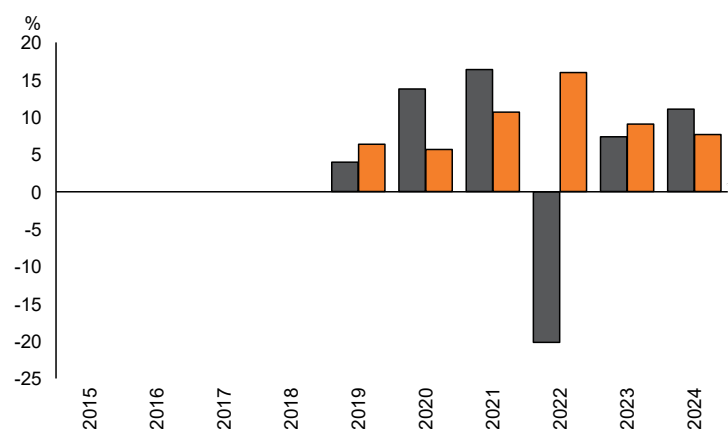
Ongoing charges	1.39%
-----------------	-------

Charges taken from the Fund under specific conditions

Performance fee	NONE
-----------------	------

- The ongoing charges figure is based on the last year's expenses and may vary from year to year. It excludes the costs of buying or selling assets for the Fund (unless these assets are shares of another fund).
- For the ongoing charge, the figure is as at 31 August 2024.
- You may also be charged a dilution levy on entry to or exit from the Fund, this is to cover costs associated with your transaction.
- For more information about charges, please see the prospectus.

Past performance



	2015	2016	2017	2018	2019	2020	2021	2022	2023	2024
Fund					4.0	13.8	16.4	-20.2	7.4	11.1
Index*					6.4	5.7	10.7	16.0	9.1	7.7

Source: FE fundinfo 2025

- You should be aware that past performance is not a guide to future performance.
- Fund launch date: 03/07/2018.
- Share/unit class launch date: 03/07/2018.
- Performance is calculated in GBP.
- * UK Consumer Price Index + 5%

Practical information

- This document is issued by Apex Fundrock Ltd and contains information on the A Accumulation shares only ("MI" and "MI Funds" are trading names of the ACD).
- Each fund of the Company has its own pool of assets and liabilities, segregated by law. If one fund were unable to pay for its liabilities the assets of the other funds could not be used to pay for those liabilities.
- You can get further detailed information regarding the Fund, including details of the investment manager and how to switch, buy and sell units and other unit classes available, within the prospectus, the supplementary information document and the annual and half yearly managers' reports. You can get these free of charge from Apex Fundrock Ltd, Hamilton Centre, Rodney Way, Chelmsford, Essex CM1 3BY or from our website: www.fundrock.com. These are available in English only. You can call us on 0345 026 4285, or look on our website for the latest share prices.
- Details of the ACD's remuneration policy (including a description of how remuneration and benefits are calculated, the composition of the remuneration committee and the identities of persons responsible for awarding remuneration and benefits) are available at www.fundrock.com/mi-fund-data/uk-fund-administration/mi-fund-data/ or by requesting a paper copy free of charge (see above for contact details).
- The Depositary of the Fund is Northern Trust Investor Services Limited.
- Please note that the tax laws of the United Kingdom may impact your own tax position.
- Apex Fundrock Ltd may be held liable solely on the basis of any statement contained in this document that is misleading, inaccurate or inconsistent with the relevant parts of the prospectus for the Fund.

This Fund is authorised in the United Kingdom by the Financial Conduct Authority. Apex Fundrock Ltd is authorised in the United Kingdom and regulated by the Financial Conduct Authority.

This Key Investor Information is accurate as at 23/01/2025.