

Key Investor Information

This document provides you with key investor information about this fund. It is not marketing material. The information is required by law to help you understand the nature and the risks of investing in this fund. You are advised to read it so you can make an informed decision about whether to invest.



Scottish Widows Regular Income Fund Class P Income

A sub-fund of the Scottish Widows UK and Income Investment Funds ICVC.
The Fund is managed by Scottish Widows Unit Trust Managers Ltd, part of the Lloyds Banking Group.
ISIN: GB00BD496Z03

Objectives and investment policy

To provide a regular quarterly income whilst providing capital growth by investing in the UK. The benchmark for the Fund is a blend of the FTSE All Share Index and the iBOXX Sterling Corporate and Collateralised Index (the "Benchmark"). 75% consists of the FTSE All-Share Index and 25% consists of the iBOXX Sterling Corporate and Collateralised Index. The Fund is actively managed by the Investment Adviser who chooses investments which, collectively, aim to provide an income return in excess of 110% of the Benchmark income yield*, each year before deduction of fees. The Fund Manager also chooses investments with the aim of providing capital growth by seeking to outperform the Benchmark on a rolling 3 year basis, before deduction of fees.

*The Benchmark income yield is based on 75% of the FTSE All-Share Index dividend yield and 25% of the yield of the iBOXX Sterling Corporate and Collateralised Index. Index Yields are calculated by totalling the annual income paid and dividing it by the respective total value of each index.

At least 80% of the Fund will invest in a diversified portfolio of UK shares and fixed interest securities. It may also invest in shares and fixed interest securities in Europe. The portion in shares may include high yielding equities as well as convertible stocks, preference shares** and warrants. The fixed interest portion will consist of investment grade bonds*** and may also include government bonds, high yield bonds, supranational bonds**** and asset backed securities such as securitised loans. Derivatives and stock lending may be used for the purpose of managing the Fund in a way that is designed to reduce risk or cost and/or generate extra income or growth (often referred to as efficient portfolio management). Scottish Widows Unit Trust Managers (SWUTM) limits the extent to which the Fund's composition can differ relative to the market for shares and fixed interest securities (as represented by the Benchmark). These limits help to deliver a level of portfolio diversification and risk management. The limits also help to achieve an appropriate balance between the extent to which the Fund's composition can diverge from the Benchmark and providing the Investment Adviser with flexibility to seek outperformance relative to the Benchmark. As a result, the Fund's performance may differ from the Benchmark.

**A preference share usually issues a fixed dividend payment which takes priority over payments of ordinary shares.

***Credit ratings indicate the likelihood that an issuer will be able to make their payments. Investment grade bonds have achieved or exceeded a minimum credit rating awarded by a credit rating agency. Therefore they are considered lower risk than bonds with a lower credit rating. Non-investment grade bonds, also known as high yield bonds, have a lower credit rating than investment grade bonds, and so are considered higher risk.

****A supranational bond is a type of fixed interest security which is issued by two or more governmental organisations.

The FTSE All-Share Index has been selected as an appropriate benchmark as it provides a representation of the returns of shares in the UK equity market. The iBOXX Sterling Corporate and Collateralised Index has been selected as an appropriate benchmark as it provides a representation of the returns of securities in the sterling investment grade corporate bond market.

Risk and reward profile

The Risk and Reward Indicator table demonstrates where the Fund ranks in terms of its potential risk and reward. The higher the rank the greater the potential reward but the greater the risk of losing money. It is based on past data, may change over time and may not be a reliable indication of the future risk profile of the Fund. The shaded area in the table below shows the Fund's ranking on the Risk and Reward Indicator.

Typically lower rewards, lower risk ← → Typically higher rewards, higher risk



- The share class is ranked at 5 because it has experienced medium to high levels of volatility over the past 5 years.
- The value of your investment and any income from it is not guaranteed and can go up and down depending on investment performance. Specific investment risks for the Fund are:
 - The value of a bond / fixed interest security could fall if the issuer's credit rating falls. Values are also likely to fall if interest rates rise (but increase when interest rates fall). In addition issuers might fail to make their income payments and/or repay capital.
 - Company shares ('equities') generally offer higher long term growth potential than some other asset classes. Values can fluctuate considerably. There's a greater risk you might not get back all of your money.
 - Exchange rate changes might cause the value of overseas investments and any income from them to go up and down.
 - The use of derivatives for Efficient Portfolio Management might not achieve the described outcomes and may result in greater fluctuations of the value of the Fund, however it is not intended that this will cause the risk profile of the Fund to change.

Charges

The charges you pay are used to pay the costs of running the Fund, including the costs of marketing and distributing it. These charges reduce the potential growth of your investment.

One-off charges taken before or after you invest

| | |
|--------------|-------|
| Entry charge | 0.00% |
| Exit charge | 0.00% |

These are the maximum charges that we might take out of your money before it is invested and before we pay out the sale proceeds of your investment. In some cases, you might pay less and you should speak to your financial adviser about this.

Charges taken from the Fund over a year

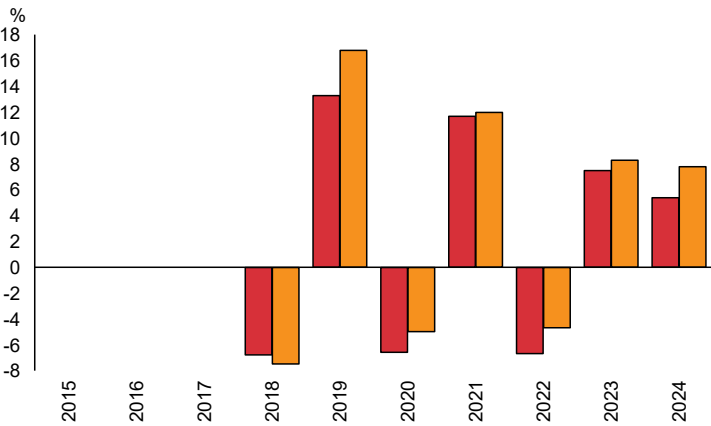
| | |
|-----------------|-------|
| Ongoing charges | 0.84% |
|-----------------|-------|

Charges taken from the Fund under specific conditions

| | |
|-----------------|------|
| Performance fee | NONE |
|-----------------|------|

- The ongoing charges figure is based on the last year's expenses and may vary from year to year. It excludes the costs of buying or selling assets for the Fund (unless these assets are shares of another fund).
- There is no charge to switch into this fund.
- The Ongoing Charges Figure (OCF) is as at 31/08/2024
- The annual report for each financial year will include detail on the exact charges made.
- The OCF is taken from the income of the Fund. For more information about charges, please refer to the Prospectus of Scottish Widows UK and Income Investment Funds ICVC, which is available at www.scottishwidows.co.uk/kiids

Past performance



| | 2015 | 2016 | 2017 | 2018 | 2019 | 2020 | 2021 | 2022 | 2023 | 2024 |
|---------------|------|------|------|------|------|------|------|------|------|------|
| Fund | | | | -6.8 | 13.3 | -6.6 | 11.7 | -6.7 | 7.5 | 5.4 |
| Benchmark 1 * | | | | -7.5 | 16.8 | -5.0 | 12.0 | -4.7 | 8.3 | 7.8 |

Source: FE fundinfo 2025

- You should be aware that past performance is not a guide to future performance.
- Fund launch date: 04/01/1995.
- Share/unit class launch date: 20/02/2017.
- Performance is calculated in GBP.
- Performance is net of charges and net of tax.
- The returns shown in the performance table illustrate past performance of the Fund and its benchmark index.
- As at 31/01/2025 the Fund's annual income yield was 4.03% and the target income yield it aims to outperform was 4.06%.
- * Benchmark 1 – Benchmark

Practical information

- The Investment Adviser to the Fund is Schroders Investment Management Limited.
- The depositary for the Fund is State Street Trustees Limited.
- The Fund prices are available from www.scottishwidows.co.uk/funds
- The tax regime applicable is that of the United Kingdom and may have an impact on your tax position.
- We calculate the value of the Fund at 8am daily on working days in the UK. Our dealing times are from 9am to 5pm each working day. Instructions received before 5pm will receive the next available price.
- Scottish Widows Unit Trust Managers Limited may be held liable solely on the basis of any statement contained in this document that is misleading, inaccurate or inconsistent with the relevant parts of the prospectus for the Fund.
- Scottish Widows UK and Income Investment Funds ICVC is a UCITS with a number of different funds. The assets and liabilities of each fund are segregated by law. Therefore, the assets of this fund belong exclusively to it and are not available to meet the liabilities of any other fund of the Scottish Widows UK and Income Investment Funds ICVC. This KIID describes a single fund of the UCITS. The Prospectus and Report and Accounts are prepared for the entire UCITS and are available in English and free of charge at www.scottishwidows.co.uk/kiids
- Further details can be found in the Supplementary Investor Information Document for the Scottish Widows OEIC and ISA funds.
- You can find further details on the Fund including its risks and the Fund's objective and policy in the Prospectus.
- You can make switches into other shares or funds. See "Switching" in the Prospectus.
- Details of our remuneration policy, which includes a description of how remuneration and benefits are calculated, the identities of the persons responsible for awarding remuneration and benefits and the composition of the remuneration committee can be found here – <http://reference.scottishwidows.co.uk/docs/grouppremun.pdf>. A paper copy is available free of charge upon request.