

Key Investor Information

This document provides you with key investor information about this fund. It is not marketing material. The information is required by law to help you understand the nature and the risks of investing in this fund. You are advised to read it so you can make an informed decision about whether to invest.



International Growth Fund Halifax Class Q Accumulation

A sub-fund of the HBOS International Investment Funds ICVC.
The Fund is managed by HBOS Investment Fund Managers Limited, part of the Lloyds Banking Group.
ISIN: GB00BD49B445

Objectives and investment policy

To provide capital growth by investing in a diversified global portfolio of company shares.

The benchmark index for the Fund is the MSCI All Country World Index (MSCI ACWI) (the "Index"). The Fund seeks to outperform the Index by 1.25% on a rolling 3 year basis, before deduction of fees.

At least 80% of the Fund will be invested in shares of companies which are part of the Index. The Fund may also invest in collective investment schemes including those managed by the HBOS Investment Fund Managers (HIFML) and its associates.

HIFML instructs the Investment Adviser on the proportion of the Fund's investments to be allocated to companies in the Index. At least 90% will be invested in companies that are in developed markets and not more than 10% in companies that are in emerging markets. The allocation may differ slightly on a day to day basis through market movements or Investment Adviser discretion.

The Fund may only take limited positions away from the Index. This means there are limitations on the extent to which the Fund's investment in various sectors† may differ to the Index. These limited positions can be more than is held in the Index (overweight) or less than is held in the Index (underweight).

The limits help to provide a balance between the spread of assets within the Fund and risk management. They also provide a balance between the amount the Fund can vary from the Index and providing the Investment Adviser with flexibility to seek to outperform the Index. Because the Fund is limited in the extent to which it can diverge from the Index it means the difference between the Fund's performance and that of the Index is likely to be smaller than that of funds with greater flexibility.

Derivatives and stock lending may be used for the purpose of managing the Fund in a way that is designed to reduce risk or cost and/or generate extra income or growth (often referred to as efficient portfolio management).

†A sector is a business area, industry or economy which shares the same characteristics. Company shares are typically grouped into different sectors depending on the company's business, for example travel and leisure or telecommunications.

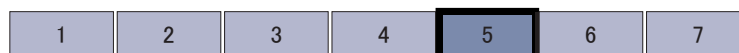
The MSCI All Country World Index (MSCI ACWI) has been selected as an appropriate benchmark as it provides a representation of the returns of securities in the equities market worldwide.

Investors should aim to hold their investment in the Fund for the medium to long term (at least five to ten years). Any Income received by the Fund is retained in the Fund and has the effect of increasing the share price. Shares can usually be bought and sold on any working day.

Risk and reward profile

The Risk and Reward Indicator table demonstrates where the Fund ranks in terms of its potential risk and reward. The higher the rank the greater the potential reward but the greater the risk of losing money. It is based on past data, may change over time and may not be a reliable indication of the future risk profile of the Fund. The shaded area in the table below shows the Fund's ranking on the Risk and Reward Indicator.

Typically lower rewards, lower risk ← | → | Typically higher rewards, higher risk



- The share class is ranked at 5 because it has experienced medium to high levels of volatility over the past 5 years.
- The value of your investment and any income from it is not guaranteed and can go up and down depending on investment performance. Specific investment risks for the Fund are:
 - Company shares ('equities') generally offer higher long term growth potential than some other asset classes. Values can fluctuate considerably. There's a greater risk you might not get back all of your money.
 - Exchange rate changes might cause the value of overseas investments and any income from them to go up and down.
 - Derivatives used for Efficient Portfolio Management may result in greater fluctuations of the value of the Fund, however it is not intended that this will cause the risk profile of the Fund to change.
 - As the Fund invests predominantly in companies which are part of the MSCI All Country World Index, performance, before charges, may fall and rise with the Index.

Charges

The charges you pay are used to pay the costs of running the Fund, including the costs of marketing and distributing it. These charges reduce the potential growth of your investment.

One-off charges taken before or after you invest	
Entry charge	0.00%
Exit charge	0.00%

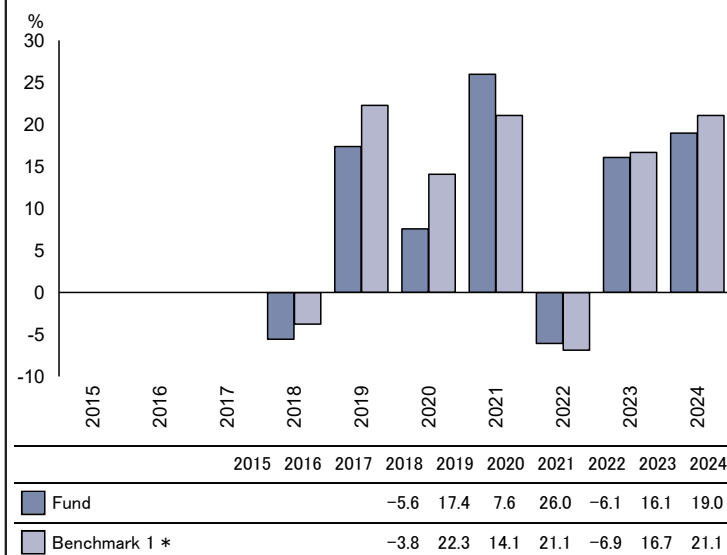
These are the maximum charges that we might take out of your money before it is invested and before we pay out the sale proceeds of your investment. In some cases, you might pay less and you should speak to your financial adviser about this.

Charges taken from the Fund over a year	
Ongoing charges	0.71%

Charges taken from the Fund under specific conditions	
Performance fee	NONE

- The ongoing charges figure is based on the last year's expenses and may vary from year to year. It excludes the costs of buying or selling assets for the Fund (unless these assets are shares of another fund).
- The Ongoing Charges Figure (OCF) is as at 30/09/2024.
- The annual report for each financial year will include detail on the exact charges made.
- The OCF is taken from the income of the Fund. For more information about charges, please refer to the Prospectus for HBOS International Investment Funds ICVC (Ref: E1648)
- www.scottishwidows.co.uk/kiids/kiids-hbos.

Past performance



- You should be aware that past performance is not a guide to future performance.
- Fund launch date: 30/05/1986.
- Share/unit class launch date: 20/02/2017.
- Performance is calculated in GBP.
- Performance is net of charges and net of tax.
- The Index plus outperformance target and the Fund performance figures are shown on an annual basis.
- In practice, as explained in the 'Objectives and investment policy' section, the Fund's outperformance target applies over a rolling 3 year basis.
- In addition, the Index plus outperformance target is calculated without deduction of charges whereas Fund performance is calculated after deduction of charges.
- The performance table illustrates past performance of the Fund and its benchmark index. The outperformance target is applied to the index and we illustrate it in the figures from 07/08/2019 onwards. Prior to this date the Fund aimed to outperform its benchmark.
- * Benchmark 1 – Benchmark

Practical information

- The Investment Adviser to the Fund is Schroders Investment Management Limited.
- The depositary for the Fund is State Street Trustees Limited.
- The Fund prices are available from www.scottishwidows.co.uk/funds
- The tax regime applicable is that of the United Kingdom and may have an impact on your tax position.
- HBOS Investment Fund Managers Limited may be held liable solely on the basis of any statement contained in this document that is misleading, inaccurate or inconsistent with the relevant parts of the prospectus for the Fund.
- HBOS International Investment Funds ICVC is a UCITS with a number of different funds. The assets and liabilities of each fund are segregated by law. Therefore, the assets of this fund belong exclusively to it and are not available to meet the liabilities of any other fund of the HBOS International Investment Funds ICVC. This KIID describes a single fund of the UCITS. The Prospectus and Report and Accounts are prepared for the entire UCITS and are available in English and free of charge at www.scottishwidows.co.uk/kiids/kiids-hbos
- Further details can be found in the Supplementary Investor Information Document for the product you're invested in.
- You can make switches into other shares or funds. See "Switching Shares" in the Prospectus.
- Details of our remuneration policy, which includes a description of how remuneration and benefits are calculated, the identities of the persons responsible for awarding remuneration and benefits and the composition of the remuneration committee can be found here – <http://reference.scottishwidows.co.uk/docs/groupremun.pdf>. A paper copy is available free of charge upon request.
- The benchmark was created using index data. The index provider does not warrant the completeness, accuracy or timeliness of the data or results to be obtained by using the data and fund performance is not calculated by the Index provider. For full index disclaimer, warranty or copyright details, please refer to the fund's prospectus.